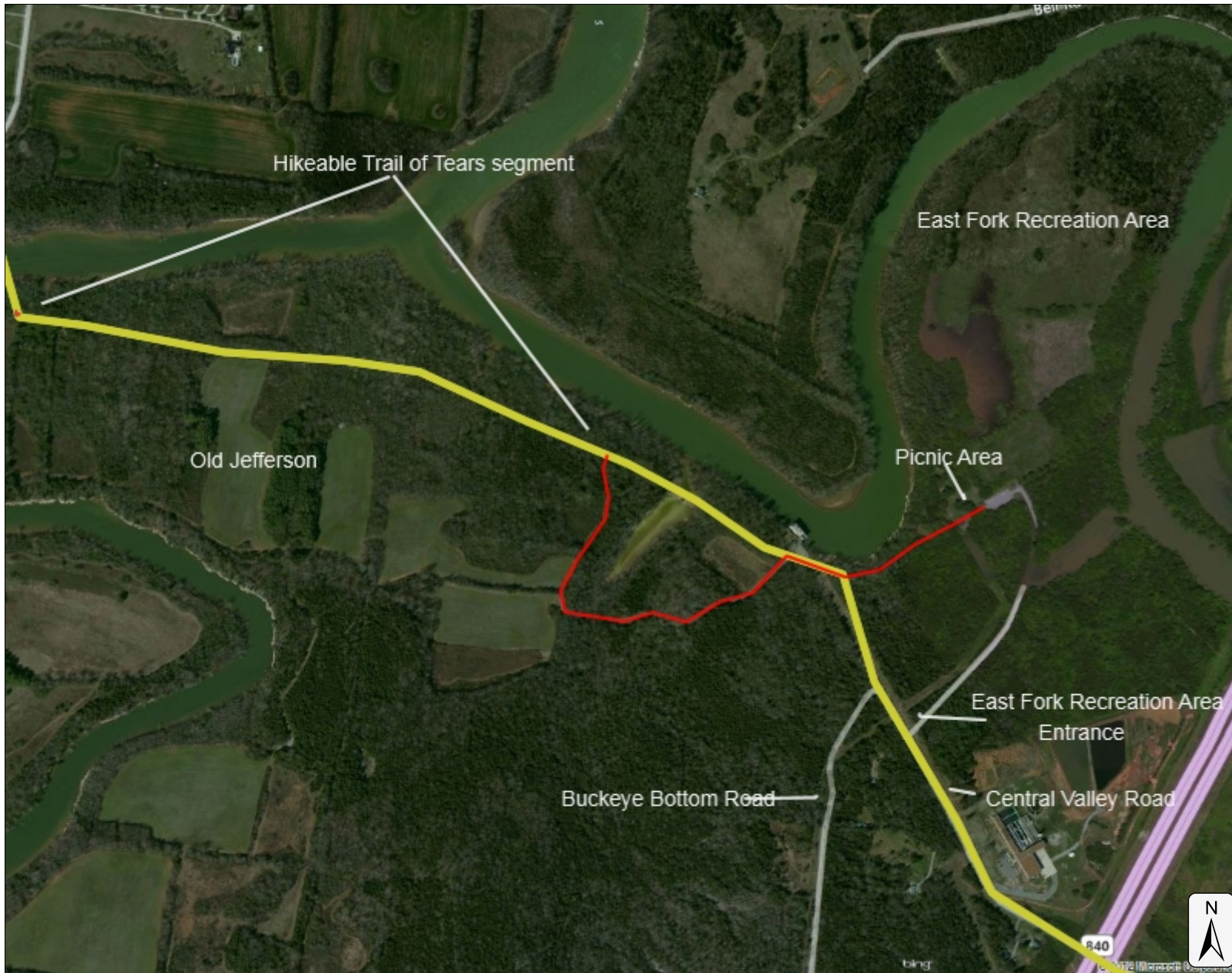




# National Park Service

## Old Jefferson Site

### Legend



### Notes

The yellow line marks the Trail of Tears National Historic Trail route. The red line is the trail from East Fork Recreation Area to the Trail of Tears segment.

0.4 0 0.19 0.4 Miles

Intermountain Geographic Resources Program -- IMGIS.NPS.GOV

This map is a user generated static output from an Internet mapping site and is for reference only. Data layers that appear on this map may or may not be accurate, current, or otherwise reliable.

THIS MAP IS NOT TO BE USED FOR NAVIGATION